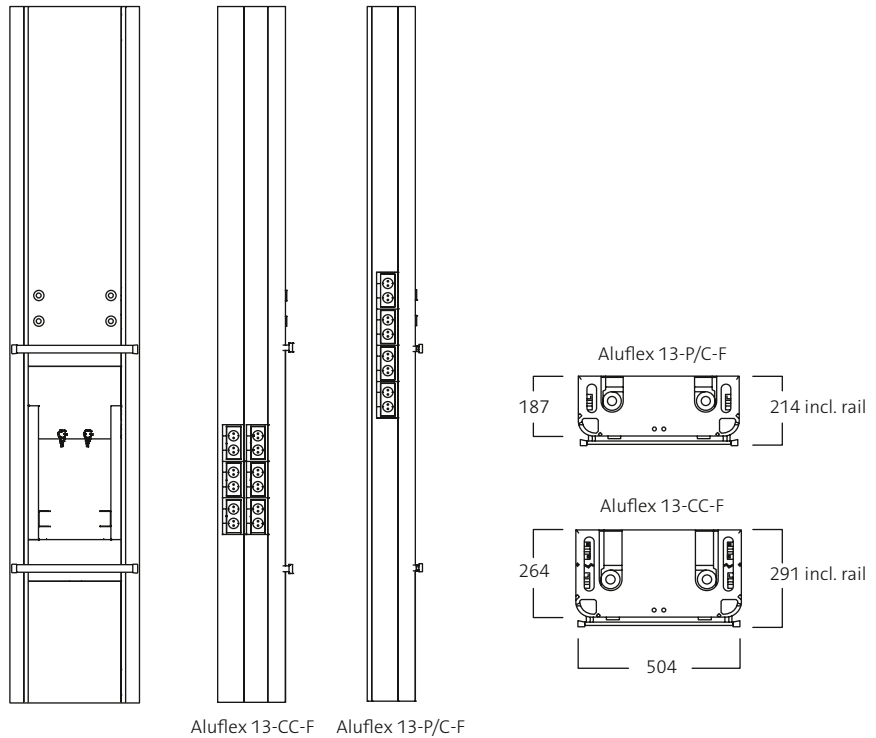


# Technical information

## Aluflex Dialys

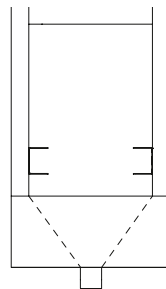
**Voltage:** 230 V/25 A  
**Material:** Aluminium/MDF  
**Weight:** approx 25 kg (Aluflex 13-P/C-F),  
 approx 30 kg (Aluflex 13-CC-F)  
**Colour:** White enamelled RAL 9010  
**Cat. no:** 18586

**MDD class:** IIa



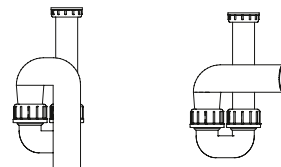
For electrical and gas components which are installed in the profiles, see component pages 39–41.

The sink is made of acid resistant hand-brushed steel. The sink has two holders for drain hoses, with each holder able to accommodate three hoses from a dialysis machine. The water trap is connected to stainless pipe termination with an R40 thread.



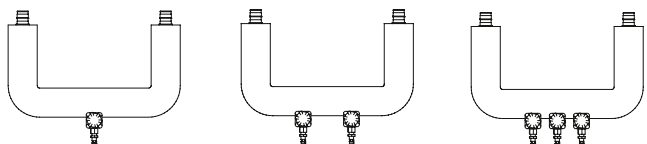
Water traps do not normally come supplied with dialysis columns, but we can provide two water trap models. A stainless water trap which can withstand high temperatures over long periods. Available both as a P model for wall connection and

an S model for floor connection. A PEH (plastic) water trap is an option that offers value for money. Available both as a P model for wall connection and an S model for floor connection.



The dialysis column is adapted to the desired make of dialysis water purification system. Normally no components come supplied with a dialysis column, although we can provide water supply pipes

with taps for draw-off. These are available with 1, 2 or 3 draw-off taps depending on the maximum number of dialysis machines that can be connected.



Ideally, the dialysis column is supplemented with a Halux 35 luminaire for use as a reading and examination light. The luminaire can be positioned on an equipment rail or wall, see page 75.

