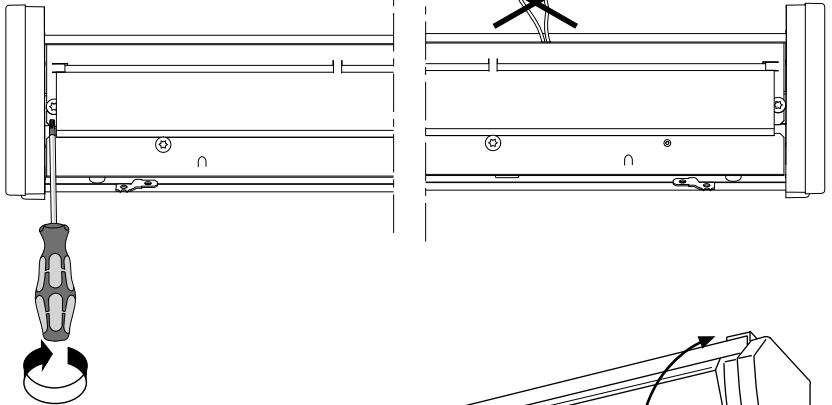
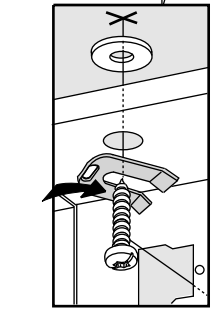
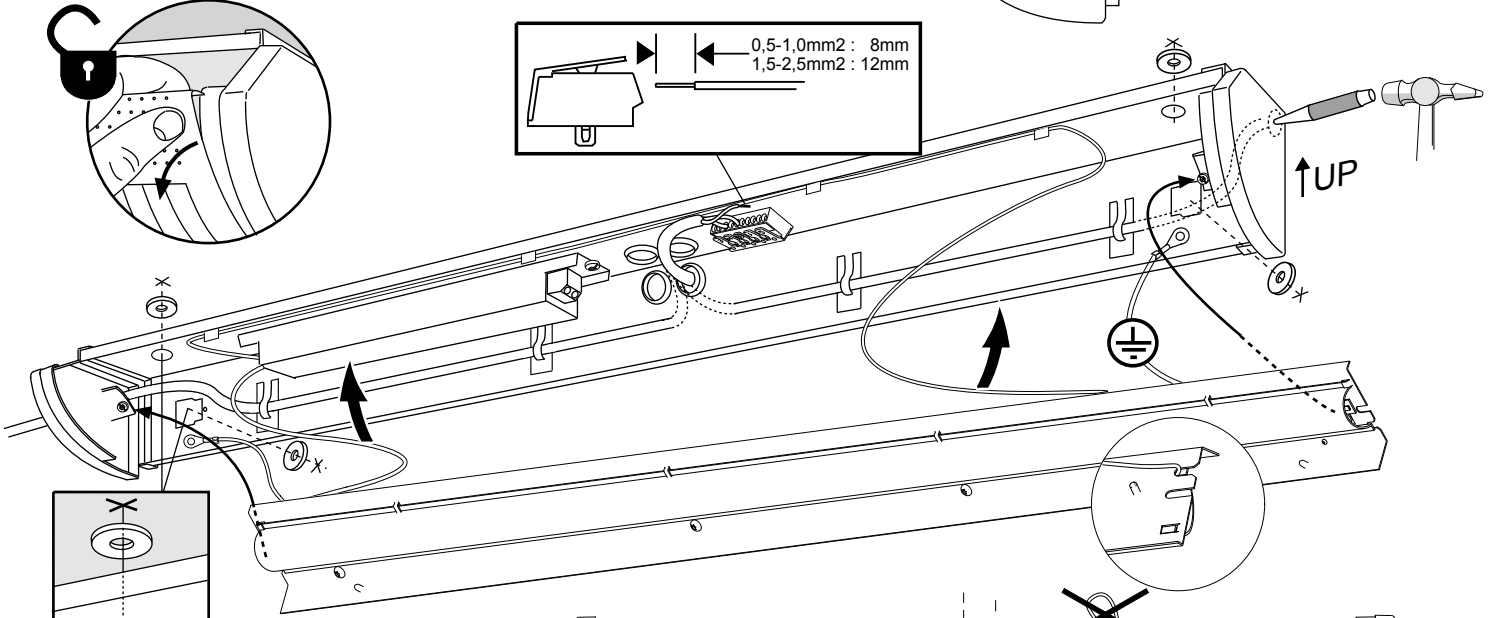
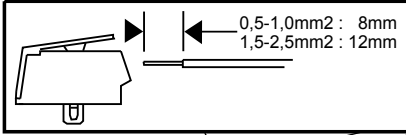
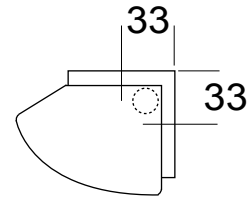
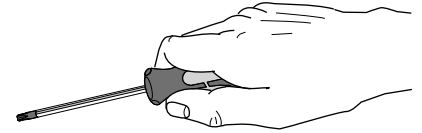


FAGERHULT

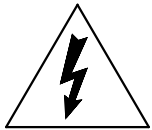
SE - 566 80 Habo

Sektor LED

1100



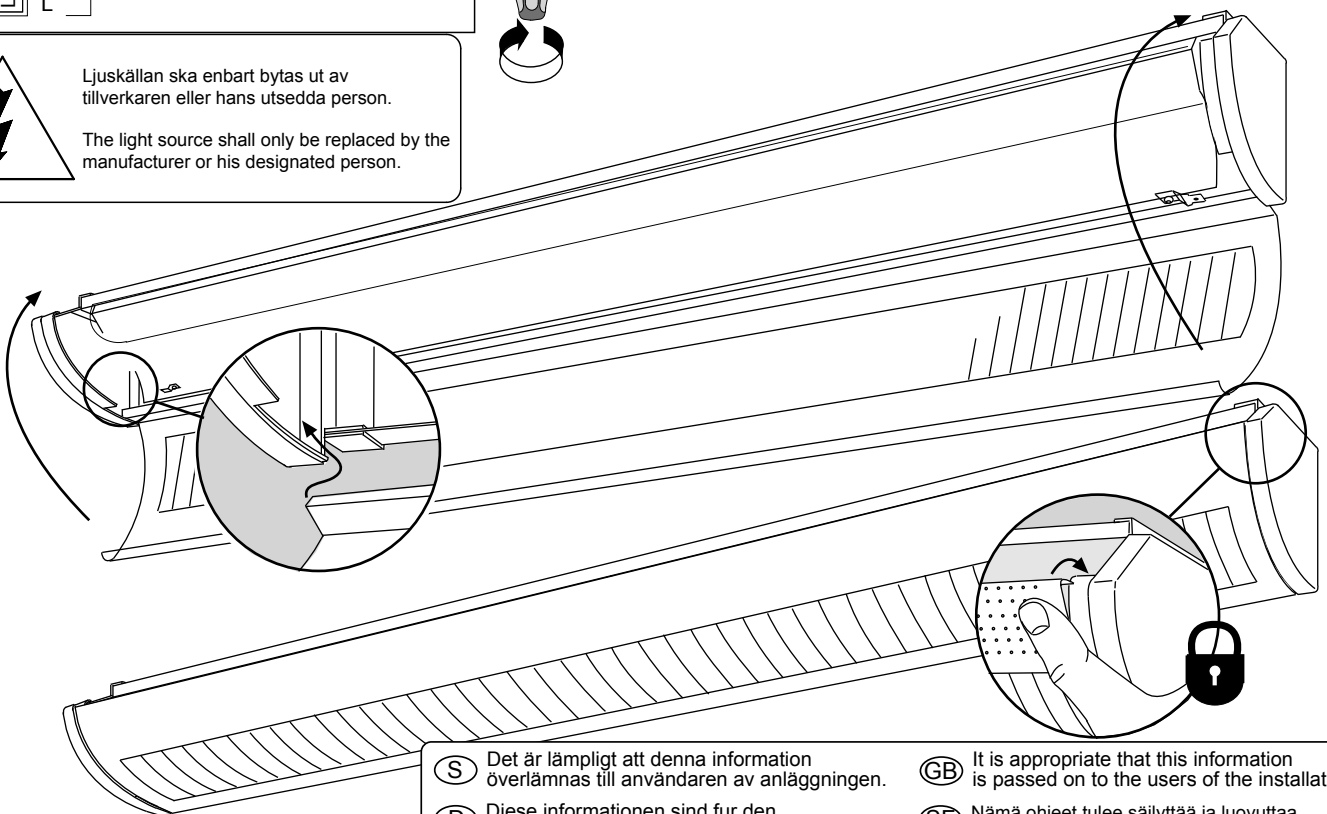
●	DA-	S Grundläggande isolering mellan nät och styr ledning.
●	DA+	
⊕	⊕	GB Basic insulation between mains and control wiring.
⊖	⊖	
●	N	
●	L	



Ljuskällan ska enbart bytas ut av tillverkaren eller hans utsedda person.

The light source shall only be replaced by the manufacturer or his designated person.

4836426 Utgåva/Edition 02



- | | | | |
|---|---|----|--|
| S | Det är lämpligt att denna information överlämnas till användaren av anläggningen. | GB | It is appropriate that this information is passed on to the users of the installation. |
| D | Diese Informationen sind für den Benutzer der Anlage vorgesehen. | SF | Nämä ohjeet tulee säilyttää ja luovuttaa kiinteistön käyttäjälle. |