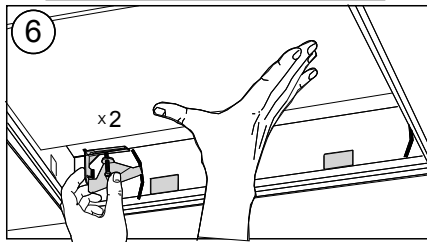
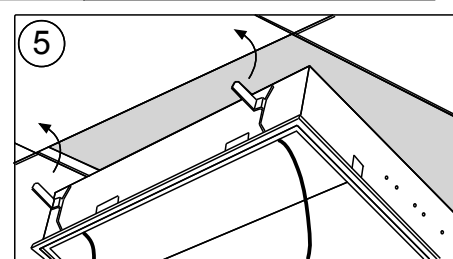
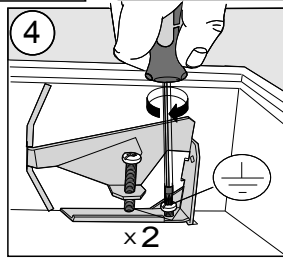
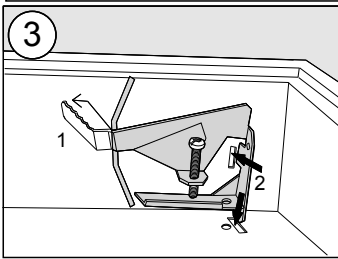
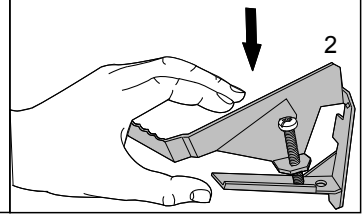
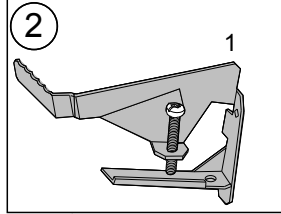
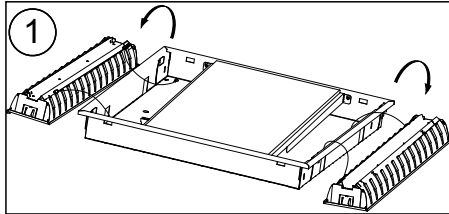
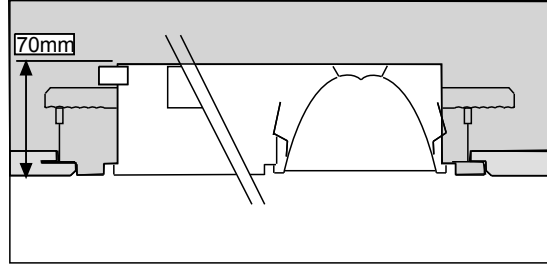
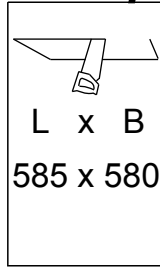
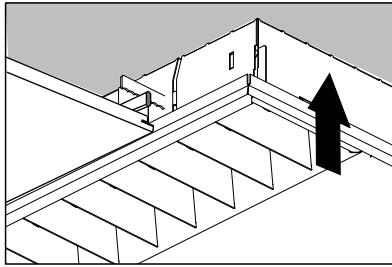
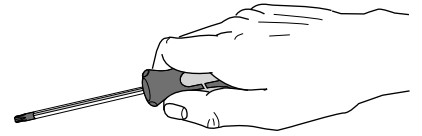
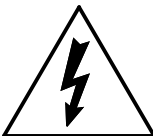
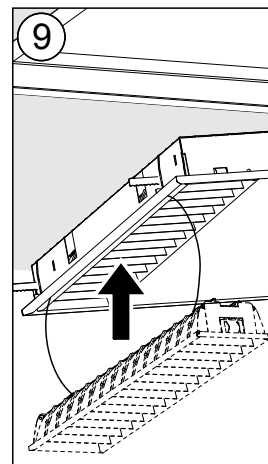
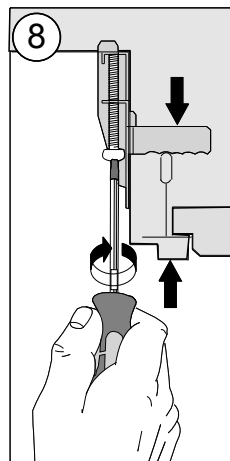
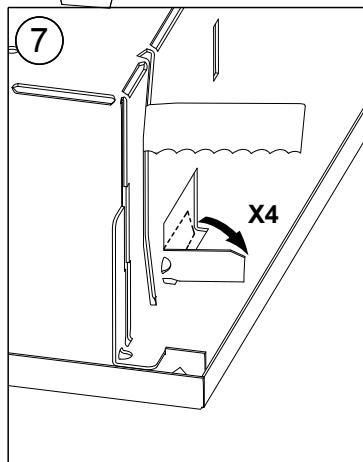


FAGERHULT SE - 566 80 Habo

Multifive Beta Opti HB



 Ljuskällan ska enbart bytas ut av tillverkaren eller hans utsedda person.
The light source shall only be replaced by the manufacturer or his designated person.



DA-	S Grundläggande isolering mellan nät och styr ledning.
DA+	
⊕	GB Basic insulation between mains and control wiring.
⊖	
N	
Z	
L	

S Det är lämpligt att denna information överlämnas till användaren av anläggningen. **GB** It is appropriate that this information is passed on to the users of the installation. **GB** For use in ventilated or unventilated spaces. t_a 25°C

D Diese Informationen sind für den Benutzer der Anlage vorgesehen. **SF** Nämä ohjeet tulee säilyttää ja luovuttaa kiinteiston käyttäjälle. **S** För användning i ventilerat eller oventilerade utrymme. t_a 25°C