

Översikt - Lackfärger / Overview - Paint colours



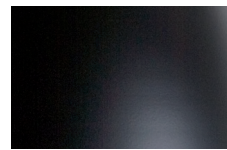
01 RAL 9016
BLANK VIT/GLOSSY WHITE



02 RAL 3020
BLANK RÖD/GLOSSY RED



05 RAL 3014
MATTROSA/FLAT PINK



07 CA. RAL 9005
MATTSVART/FLAT BLACK



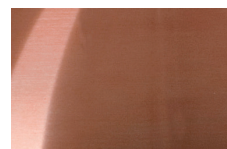
09 RAL 2009
BLANK ORANGE/GLOSSY ORANGE



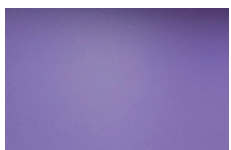
10
SLIPAD MÄSSING/
POLISHED BRASS



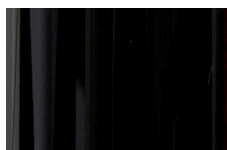
11
SLIPAD ALUMINIUM/
POLISHED ALUMINUM



13
SLIPAD KOPPAR/
POLISHED COPPER



19 RAL 4005
MATTLILA/FLAT PURPLE



27 CA. RAL 9005
BLANKSVART/GLOSSY BLACK



36 RAL 9016
MATTVIT/FLAT WHITE



50
BLANK NICKEL/GLOSSY NICKEL



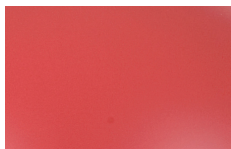
54
GRAFIT STRUKTUR/
GRAPHITE STRUCTURE



55 RAL 7037
MATT VARMGRÅ/
FLAT WARM GREY



57 RAL 7044
MATTSAND / SAND
COLOUR FLAT



63 RAL 3031
MATTRÖD/FLAT RED



67 RAL 6034
MATTTURKOS/
FLAT TURQUOISE



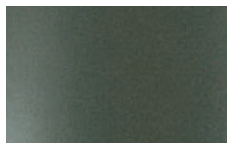
68 NCS 0500
VIT STRUKTUR/
WHITE STRUCTURE



71 RAL 1037
MATT SOLGUL/
FLAT SUNNY YELLOW



77
GRÅ STRUKTUR/
GREY STRUCTURE



85 RAL 140 40 10
MATT AVOCADGRÖN/
FLAT AVOCADO GREEN



86 CA. RAL 9005
SVART STRUKTUR/
BLACK STRUCTURE



87 RAL 240 40 15
MATT DUVBLÅ/FLAT
DOVE BLUE



150 CA. RAL 5012
BLANK BLÅ/GLOSSY BLUE



152 CA. RAL 110 80 70
BLANK LIMEGRÖN/
GLOSSY LIMEGREEN



153 CA. RAL 4008
BLANK LILA/GLOSSY PURPLE

BLANK LACK/GLOSSY
SLIPAD YTA/POLISHED
MATT LACK/FLAT
STRUKTURLACK/STRUCTURE

GLANSTAL/GLOSS 90
GLANSTAL/GLOSS 90
GLANSTAL/GLOSS 7-10
GLANSTAL/GLOSS 7-10