

the **e** senses

e-Sense **Motion**

e-Sense **Motion**

## **Wireless presence control for reactive spaces**

### **Advantages**

- Quick and simple installation
- All functions are integrated in the post top luminaires with automatic dimming via sensors
- The app allows you to test and read values at the installation portraying the status of the installation
- The on-pole unit can be remotely mounted on posts and allows for control of any DALI luminaire. Contains a sensor and radio module
- Future-proof scalability – easy to expand

e-Sense **Motion – Connected Solution**

### **Additional Advantages**

- Increased operational efficacy and reduced maintenance expenses by targeting the deployment of technicians
- Measured energy per luminaire for enhanced energy reporting
- Traffic intensity measurement by counting PIR triggers
- The lighting installation's sustainability, quality and dependability are all increased with good monitoring
- Flexible accessibility with a user-friendly, web-based software platform



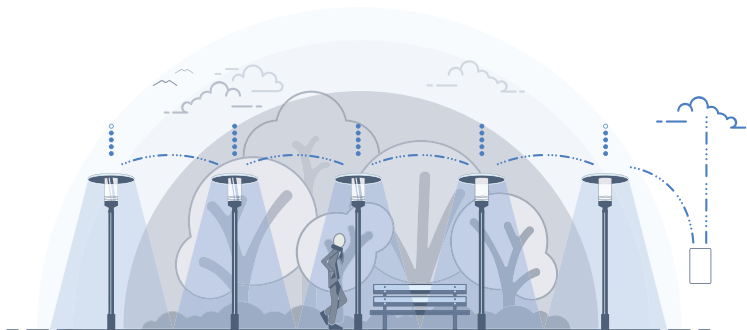
## e-Sense **Motion**

e-Sense Motion is an energy-efficient control system which can be programmed to illuminate according to need.  
The luminaires are automatically dimmed when no presence is detected.



### e-Sense **Motion – Linked Solution**

The foundation of the e-Sense Motion system that reacts to presence and permits the communication between more than one luminaire. Ideal for foot and bike paths, illuminated trails or suburban streets. The Linked system can be retro-fitted to an existing installation, expanded to include new luminaires or up-graded to connected at any point. The post top luminaires have integrated PIR sensors for presence control and the luminaires communicate with one another via a radio protocol.



### e-Sense **Motion – Connected Solution**

A cloud and web-based solution which allows you to remote control and inspect the lighting from a distance via a gateway which interacts with the installation. It includes everything in the Linked Solution, but allows you to log into a website using the installation's unique password in order to check energy consumption and various measured values, i.e. the presence detection level, in addition to receiving notifications if the luminaire is defective and needs to be repaired. All information is retrieved from the cloud.



**PRESENCE DETECTION**



**REMOTE CONTROL**



**WIRELESS COMMUNICATION**



**CONTROL VIA APP**



Energy savings  $\leq$

**43%**



### e-Sense **Motion**

The luminaires automatically dim when no one is present. When presence is detected, a predetermined number of luminaires brighten to a pre-programmed level, e.g. 100 %. And they remain illuminated behind you for a preset time-period.

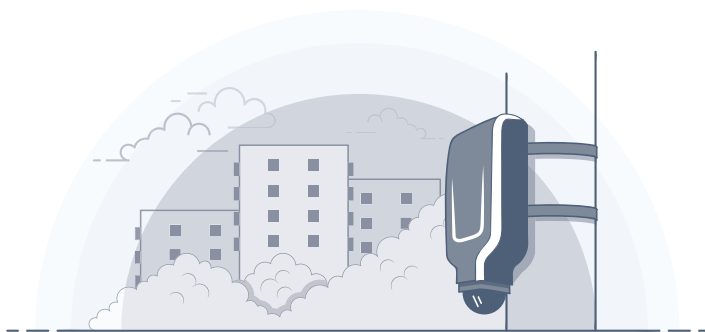


### e-Sense **Motion – App**

The system is easily programmed using an app and Bluetooth dongle at the lighting installation. A duplex communication system, all luminaires act as both a master and slave and control and communicate with each other.

After the initial programming, all you'll need to do is connect to one luminaire in order to reach all of them.

Each installation is issued a unique identity and password which you enter when connecting. A clear overview of all the illumination points allows you to decide on how many luminaires should illuminate when someone is present, for how long, and to which illumination level they should be dimmed. You can customise the settings according to traffic conditions, or you can select from the pre-set lighting scenes.



## e-Sense **Motion – On Pole**

e-Sense Motions On Pole device communicates via DALI. The result is an open solution where the control system can be used for any DALI-powered LED luminaires, regardless of manufacturer. In other words, you are not limited to using a single supplier.

### **Accessories**

Bluetooth dongel	<b>86400</b>
GPRS Gateway	<b>86401</b>
On Pole Unit - Black	<b>86402</b>
On Pole Unit - alugrey	<b>86403</b>
On Pole Unit - Anthracite grey	<b>86404</b>
On Pole Montage kit	

FAGERHULT